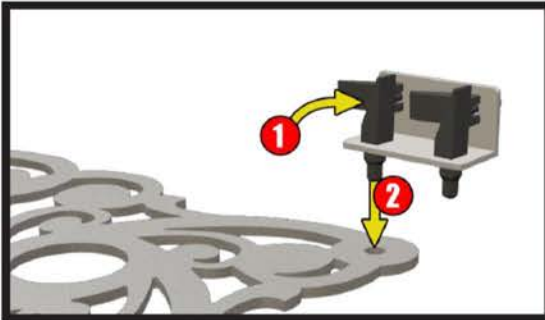


**Dimensions: One Cube Unit**  
22.5"W X 22.5"H X 22.5"D

### STEP ONE

Release Superlever latch by switching upwards, and insert into panel hole. (**NOTE:** only one side of the C4's superlevers can be released at a time due to interference.)



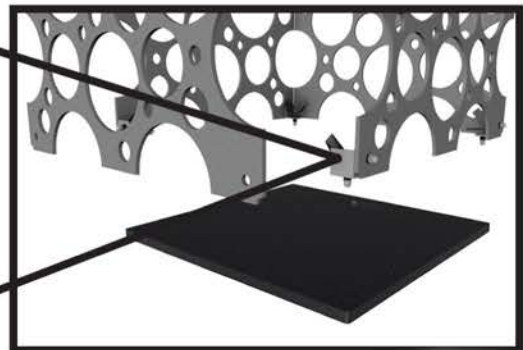
### STEP THREE

Repeat steps one and two to create your column structure horizontally on the ground.



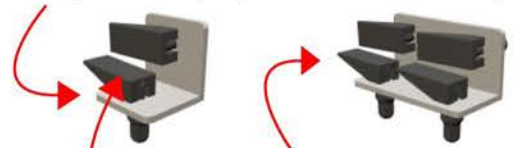
#### NOTE:

Depending on height of the Supercolumn, and the product used, a Superbase may be required. This is affixed to the bottom of the Supercolumn during Step Three, using 3-way superlever connectors.



### HARDWARE

C2 (Used at very top and bottom of column)



C4 (Used for all other joints)

Superlever Latch

### STEP TWO

Push latch back down to fasten.



### STEP FOUR

Raise the Supercolumn into the vertical position!

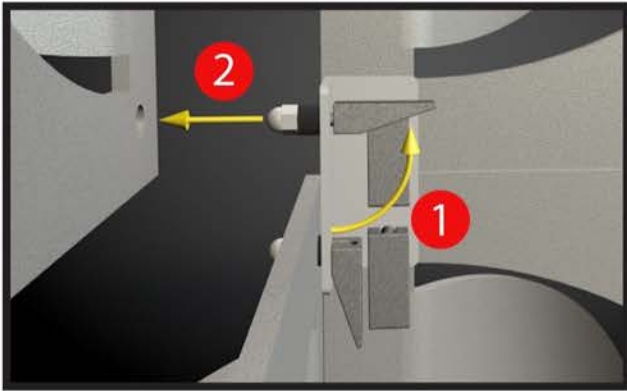


**Dimensions: One Cube Unit**  
22.5"W X 22.5"H X 22.5"D

### SUPERLEVER OPERATION INSTRUCTIONS

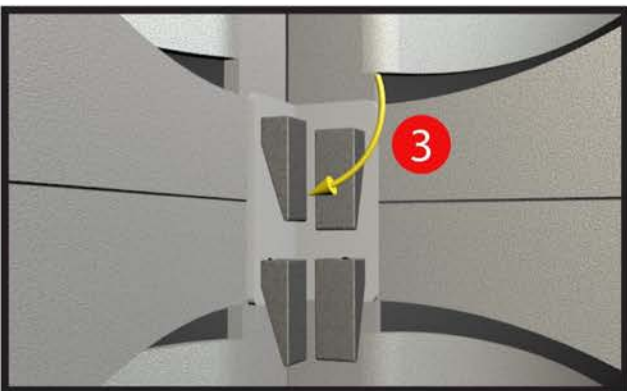
#### STEP ONE

Release SuperLever latch by switching upwards, and then insert into panel hole.



#### STEP TWO

Push latch back down to fasten.



### SUPERCOLUMN ASSEMBLY INSTRUCTIONS

#### STEP ONE

Use C2 and C4 connectors to build the SuperColumn, one cube layer at a time. A ladder will be necessary to reach the higher levels.



**NOTE:**  
Depending on height of the SuperColumn, and the product used, a SuperBase may be required. This is affixed to the bottom of the Supercolumn in the very beginning of assembly using a 3-way SuperLever connector.



#### DISASSEMBLY INSTRUCTIONS:

SuperColumn **MUST** be disassembled from top down, in reverse order as the assembly process. Removal of bottom panels first may result in a toppling column.

If you have questions about assembly or any ATOMIC products please call 717-626-4408

Super  
Frame



Frosty

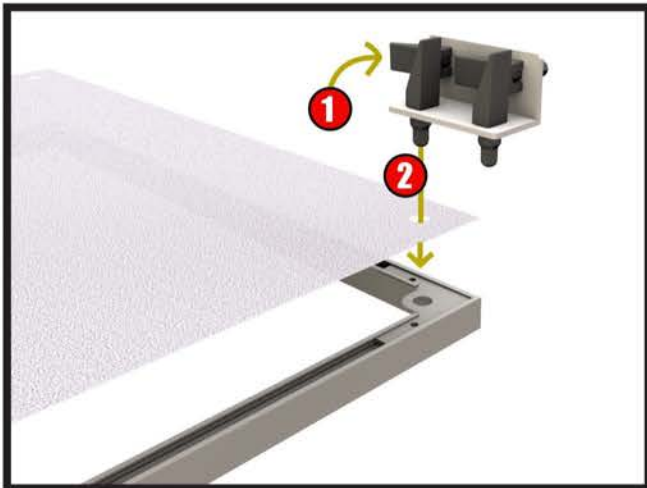


Dimensions: One Cube Unit  
22.5"W X 22.5"H X 22.5"D

### STEP ONE

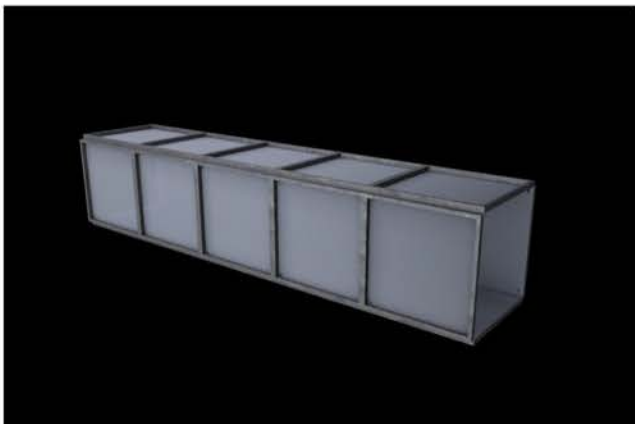
Release Superlever latch by switching upwards, and insert through frosty hole and into panel hole.

**NOTE:** only one side of the C4's superlevers can be released at a time due to interference.



### STEP THREE

Repeat steps one and two to create your column structure horizontally on the ground.



### HARDWARE

C2 (Used at very top and bottom of column)

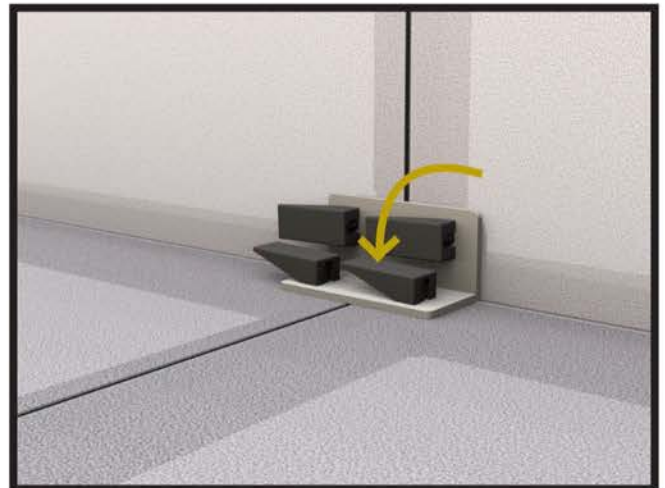


C4 (Used for all other joints)

Superlever Latch

### STEP TWO

Push latch back down to fasten.



### STEP FOUR

Raise the Supercolumn into the vertical position!

